

# Nikon COOLPIX775 DIGITAL CAMERA

En



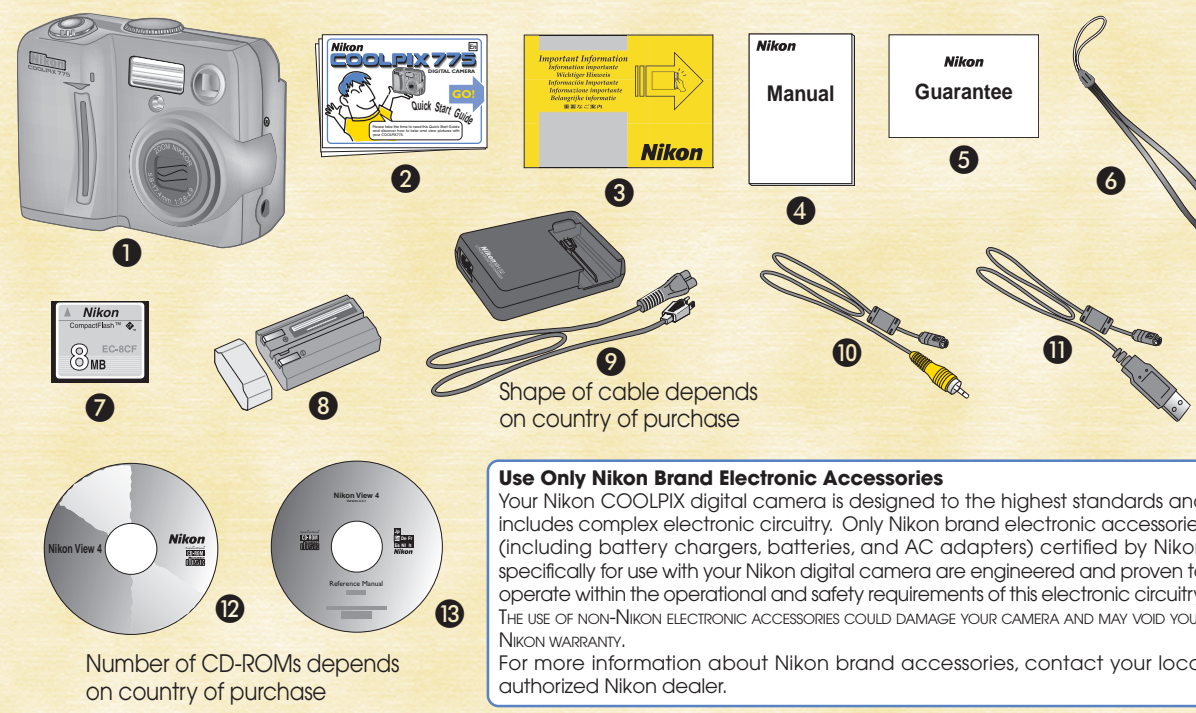
**GO!**  
Quick Start Guide

Please take the time to read this Quick Start Guide and discover how to take and view pictures with your COOLPIX775.

## Step 1

### Taking the camera out of the box

1. Take the camera and all accessories out of the box.
2. Check that you have all of the items listed below:
  - 1 COOLPIX775 Camera
  - 2 Quick Start Guide (This Guide)
  - 3 "Important Information" Envelope
  - 4 Instruction Manual
  - 5 Guarantee
  - 6 Camera Strap
  - 7 CompactFlash™ Memory Card (Memory card for recording your pictures)
  - 8 Battery (EN-EL1 Rechargeable), with terminal cover
  - 9 Battery Charger (MH-52)
  - 10 Video Cable (For connecting your camera to your TV/ VCR)
  - 11 USB Interface Cable (For connecting your camera to your computer)
  - 12 Nikon View 4 CD-ROM
  - 13 Nikon View 4 Reference Manual CD-ROM

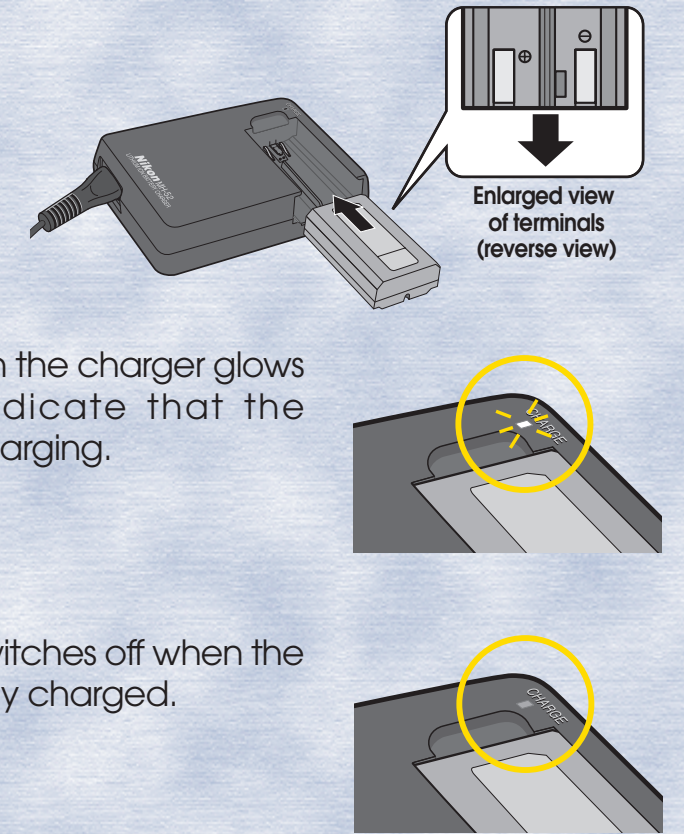


**Use Only Nikon Brand Electronic Accessories**  
Your Nikon COOLPIX digital camera is designed to the highest standards and includes complex electronic circuitry. Only Nikon brand electronic accessories (including battery chargers, batteries, and AC adapters) certified by Nikon specifically for use with your Nikon digital camera are engineered and proven to operate within the operational and safety requirements of this electronic circuitry. THE USE OF NON-NIKON ELECTRONIC ACCESSORIES COULD DAMAGE YOUR CAMERA AND VOID YOUR NIKON WARRANTY. For more information about Nikon brand accessories, contact your local authorized Nikon dealer.

## Step 2

### Charging the rechargeable battery

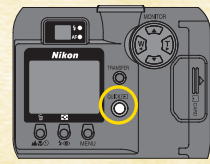
- 1 Plug in the battery charger (MH-52).
- 2 Insert the battery (EN-EL1 rechargeable battery) into the battery charger. The battery will begin charging immediately. It takes approximately 2 hours.
- 3 The red lamp on the charger glows steadily to indicate that the batteries are charging.
- 4 The red lamp switches off when the batteries are fully charged.



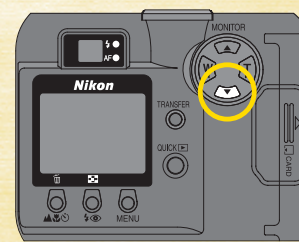
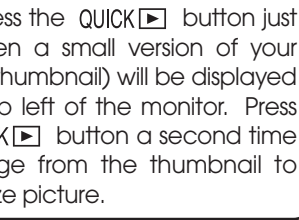
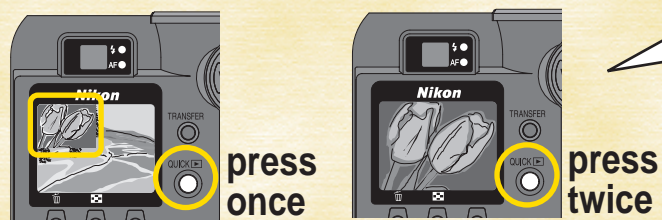
## Step 5

### Checking your Picture

You can review the pictures you have taken by pressing the QUICK REVIEW button.

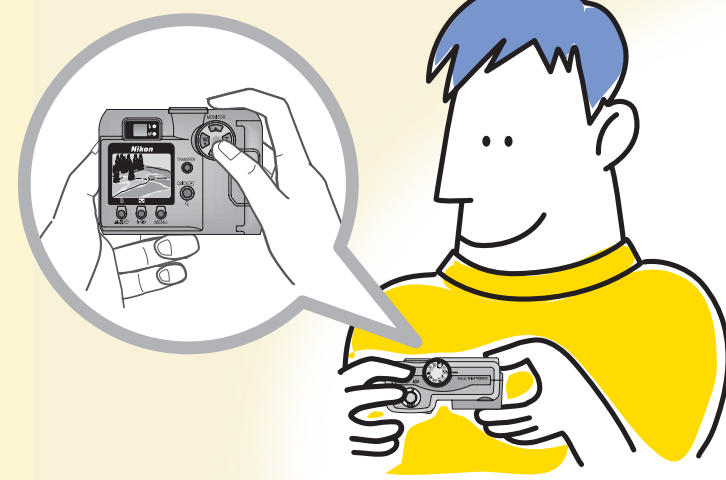


- 1 Press the QUICK REVIEW button twice. The button is on the right of the monitor.
  - If you press the QUICK REVIEW button just once then a small version of your picture (thumbnail) will be displayed in the top left of the monitor. Press the QUICK REVIEW button a second time to change from the thumbnail to the full-size picture.
- 2 The picture which you have just taken will be displayed in the monitor.
- 3 Press the multi-selector down to cycle through all the pictures that you have taken. Press the multi-selector up to cycle through in reverse order.
  - Press the shutter release button halfway down to stop reviewing the pictures and focus your next shot.
- 4 If you have finished taking pictures, turn the camera OFF. That completes our review of the basic operation of your COOLPIX775.



## Step 5

### Checking your Picture



## Step 1

### Taking the camera out of the box



## Step 2

### Charging the rechargeable battery



## Step 3

### Setting up the camera

## Taking Photographs

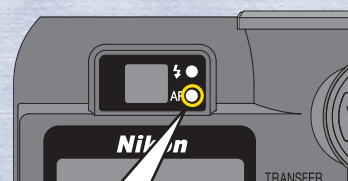


## Step 4

### Taking Pictures

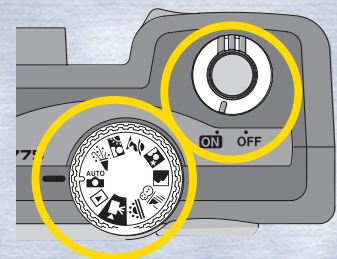
**Congratulations!**  
You have just taken your first digital picture. You can now view your pictures enlarged on a television or computer screen. Refer to the reverse side of this Quick Start Guide.

- 3 Frame the subject in the middle of the picture using the viewfinder or the monitor and press the shutter release button half-way down to check whether the subject is in focus.



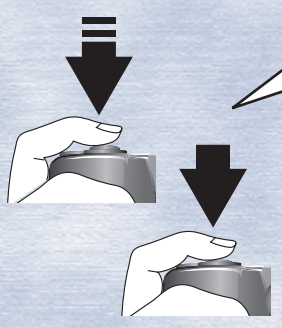
If the subject is in focus, the green light on the right of the viewfinder will glow steadily.

- 1 Turn the dial on the top of the camera to the position indicated by the AUTO icon. Check that the camera is ON.



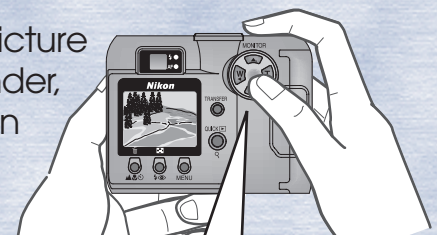
**NOTE**  
When you first use your COOLPIX775, the date and time will not be set. Setting the date and time allows you to record exactly when you took your pictures. For further details refer to page 42 of the Instruction Manual.

- 4 Without removing your finger from the shutter release button, press the button all the way down to take your picture.



There are two ways of pressing the shutter release button. Pressing the button halfway down allows you to check whether your subject is in focus. Press the shutter release button all the way down to take your picture.

- 2 Compose the picture using the viewfinder, or the monitor on the back of the camera.



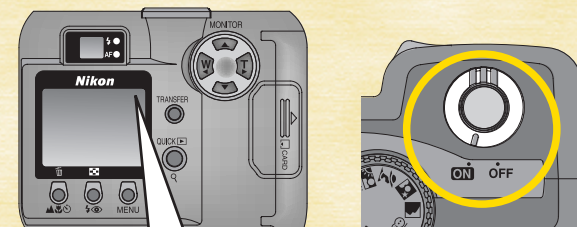
The **W** and **T** buttons operate the zoom. Pressing the **T** button brings the subject of your photograph closer. Pressing the **W** button moves the subject further away and widens the field of view.



## Taking Pictures

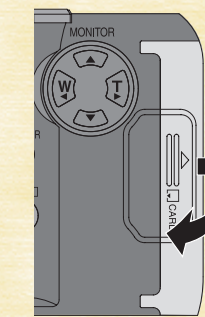
## Step 4

- 9 Switch the camera ON, and check the battery level in the monitor.



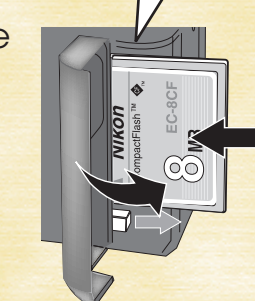
The battery level icon is displayed in the top right corner of the monitor.  
**No icon:** The battery is sufficiently charged.  
**■ ■ ■ ■ ■:** The battery is running low and should be exchanged soon.  
**■ ■ ■ ■ ■:** WARNING!! BATTERY EXHAUSTED: The battery is exhausted and must be replaced with a fully charged (or new) battery before the camera can be used.  
 \* Note that only the Nikon EN-EL1 rechargeable battery included with the camera can be inserted into the battery charger. 2CR5 (DL245) lithium batteries can be used with the COOLPIX775, but they are not rechargeable.

- 6 Open the memory card slot cover on the side of the camera as shown right.



Insert the card into the slot with the Nikon CompactFlash™ label towards the rear side of the camera.

- 7 Insert the memory card into the slot.



- 8 After inserting the memory card and making sure that it is properly seated, close the slot cover.

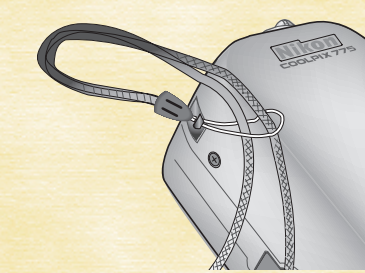
### NOTE

The memory card included with your COOLPIX775 is ready for use. Please note that you will usually have to format a memory card before using it for the first time. Refer to page 37 of the Instruction Manual for further details.

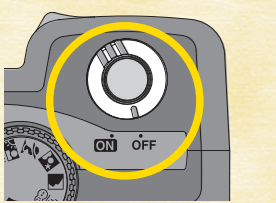
## Step 3

### Setting up the camera

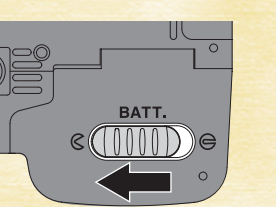
- 1 Attach the camera strap as shown in the illustration.



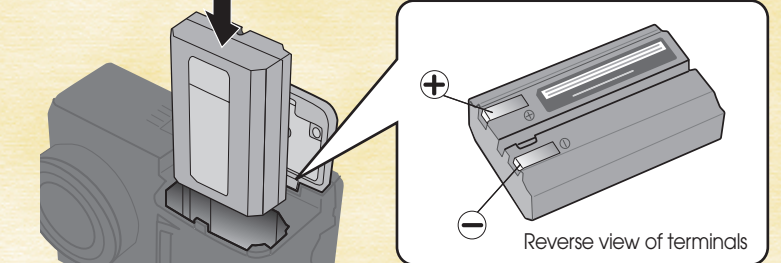
- 2 Check that the camera is turned OFF.



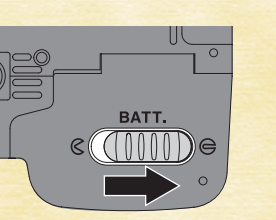
- 3 Open the battery cover by sliding the latch on the bottom of the camera towards the icon, as shown right.



- 4 Insert the battery into the camera as shown below. Be careful to insert the battery the correct way around.



- 5 After inserting the battery, close the cover to push the battery down, hold the cover shut, and slide the latch back towards the icon, as shown right.





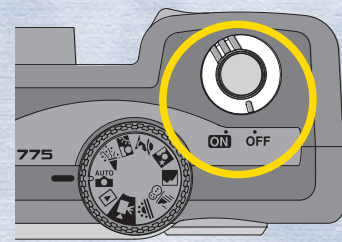
# Viewing your pictures on a television or computer

COMPUTER

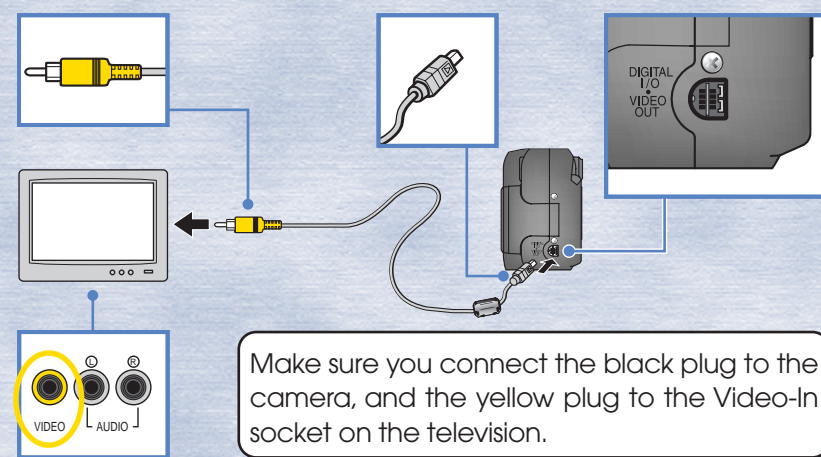
TV/VCR

## Viewing your pictures on a television screen

- 1 Turn the camera OFF.



- 2 Use the video cable included with the camera to connect the camera to the television as shown in the illustration.



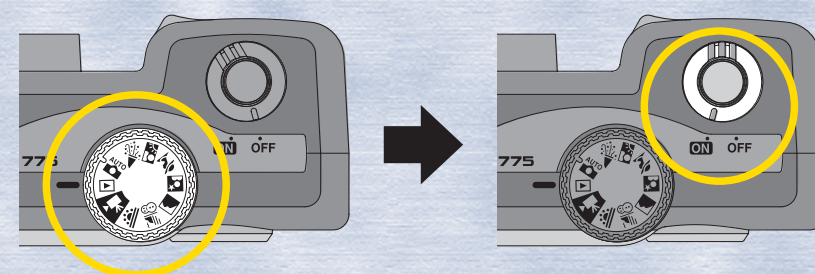
- 3 Insert a memory card containing image data into the camera. (To insert the memory card, refer to Steps 3.6, 3.7 and 3.8 on the front side of this Quick Start Guide).

- 4 Switch your television to the video channel.

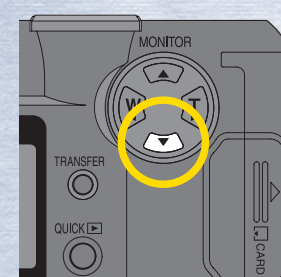
For information on how to switch the television to the video channel, see the manual provided with the television.

- 5 Turn the camera mode dial to **ON**.

- The television will show the picture displayed in the camera monitor.



- 6 When the camera is turned on, the last picture taken will be displayed in the monitor. Press the multi-selector down to cycle through all the pictures that you have taken.



## Viewing your pictures on a computer screen

### NOTE

**To Users of Windows XP Home Edition/Professional and Windows 2000 Professional**

When installing, uninstalling or using Nikon View 4, log on as the Computer administrator (Windows XP Home Edition/Professional) or Administrator (Windows 2000 Professional).

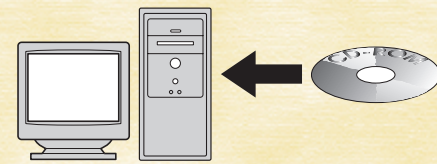
### Installing Nikon View 4

To transfer pictures from the camera to the computer using the USB cable provided, it is first necessary to install Nikon View 4.

- 1 Turn on and start up the computer.

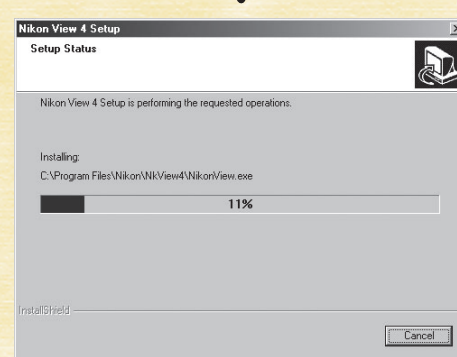
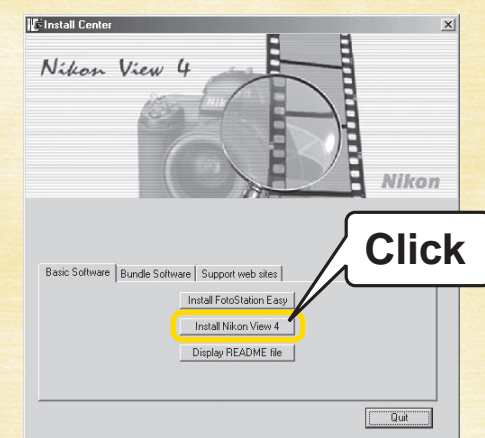
- To help keep track of your pictures, install the image database software included with Nikon View 4. Depending on where you purchased your camera, the COOLPIX775 comes with Canto Cumulus (for Windows and Macintosh), iView Media Pro (for Macintosh), or FotoStation Easy (for Windows and Macintosh) image database software. If using Cumulus or iView Media Pro, they should be installed before installing Nikon View 4. If using FotoStation Easy, it should be installed after installing Nikon View 4. Note that Cumulus and iView Media Pro are not supplied to users in Europe. For further details see the Nikon View 4 instruction manual, or the image database software instruction manual.

- 2 Insert the Nikon View 4 CD-ROM into the CD-ROM drive.



- 3 The Install Center welcome window will be displayed on screen.

- 4 Click on the Nikon View 4 button and install Nikon View 4 following the on-screen instructions.



- 5 When the installation is complete, leave the CD-ROM in the CD-ROM drive and restart the computer.

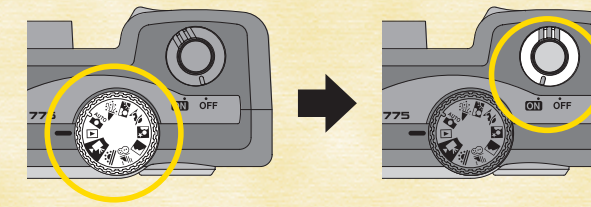
### Nikon View 4

Nikon View 4 allows you to use the computer to display pictures recorded on the camera's memory card. Nikon View can also be used to transfer pictures from the memory card to the computer. Nikon View cannot be used to view images after they have been transferred to the computer. To view images stored on the computer, use the image database software included with Nikon View. Refer to the Nikon View 4 Reference Manual CD-ROM for further details.

### Transferring images to the computer

- 1 Insert a memory card containing image data into the camera. (To insert the memory card, refer to Steps 3.6, 3.7 and 3.8 on the front side of this Quick Start Guide.)

- 2 Turn the camera mode dial to **ON** and turn the camera ON.



- 3 Use the camera monitor to select and confirm the images to be transferred to the computer.

- Pressing the **OK** button allows you to view 4 or 9 pictures in the monitor at the same time (Thumbnail display).

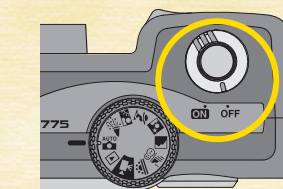
- Images in the thumbnail display can be selected using the **Multi-selector** buttons on the multi-selector.



- Images selected for transfer will be marked by the **Transfer icon**. By default, all images will be marked for transfer.

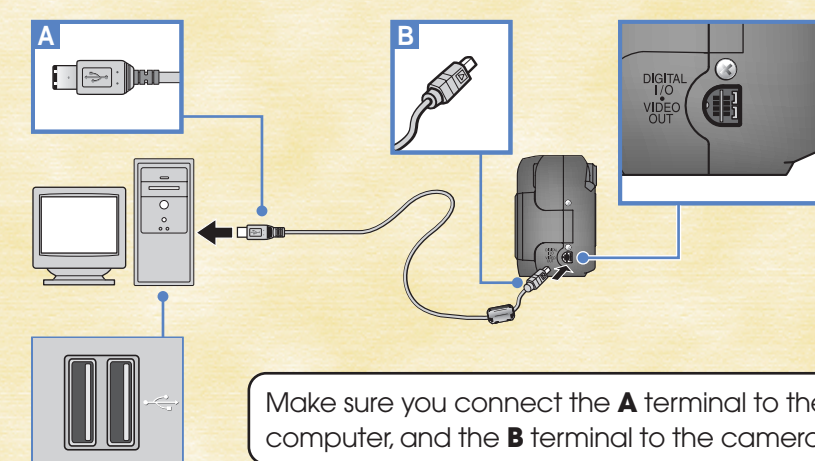
- If the memory card contains pictures that you do not want to transfer to the computer, select the picture and press the TRANSFER button to remove the transfer icon. (Press the TRANSFER button once again to reselect the image.)

After you have confirmed the images that you wish to transfer to the computer, turn the camera OFF.



- 4 Turn on and start up the computer.

- 5 Connect the camera to the computer using the USB interface cable. Insert the **A** plug into the computer's USB socket, which can be recognized by the same icon as is found on the plug. Insert the **B** plug into the camera's Digital I/O socket (see below). Note the shape of the plug and socket and make sure to insert the plug the correct way around. Do not force the plug.



Make sure you connect the **A** terminal to the computer, and the **B** terminal to the camera.

### Installing FotoStation Easy

\* FotoStation is only available for users in Europe.

- 1 Click on the Install FotoStation Easy button in the Welcome window and install FotoStation Easy according to the on-screen instructions. Installation of FotoStation Easy includes installation of QuickTime Player.

#### FotoStation Easy

FotoStation Easy is image database software, designed for use together with Nikon View and your COOLPIX camera. While Nikon View allows you to select and transfer pictures from your camera to your computer, FotoStation Easy allows you to organize and view your pictures after they have been transferred to your computer. This is not possible using Nikon View alone. Once FotoStation Easy is installed, images transferred to the computer will automatically be displayed in the FotoStation Easy window. FotoStation Easy allows you to sort your pictures by folder, filename or text label. FotoStation Easy also allows you to enhance and resize your pictures.

#### FotoShare

If your computer is connected to the internet you can upload pictures from FotoStation Easy to Nikon FotoShare, Nikon's on-line photo album service. You can register for FotoShare when you first start up FotoStation Easy after installation, or at anytime later using the FotoStation Easy links menu. Refer to the instruction manual provided (which is contained on the CD-ROM) for detailed instructions.

- 2 Once FotoStation Easy is installed, it will start up automatically whenever Nikon View starts. You can also start FotoStation Easy at any time by clicking on the FotoStation Easy icon (Macintosh) or selecting FotoStation Easy from the Program menu (Windows).

- 6 Turn the camera ON.
  - When you turn the camera on, the lens cover will open and the lens will extend. The monitor will remain off. Nikon View will start automatically, and the Image Transfer window will be displayed on the computer screen.

If FotoStation Easy has been installed, the FotoStation window will also appear behind Nikon View.

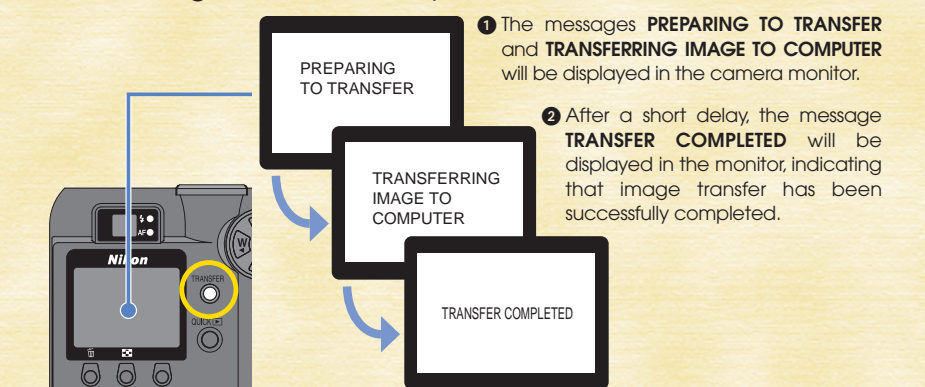
If you are using Windows, you must "register" the camera when you first connect the camera to the computer.

- Windows XP Home Edition/Professional, Windows 2000 Professional, Windows Millennium Edition (Me)  
Registration will take place automatically when the camera is connected to the computer.

- Windows 98/Windows 98 Second Edition (SE)  
Follow the on screen instructions to register the camera.

Refer to the Nikon View 4 Reference Manual CD-ROM for further details.

- 7 Press the TRANSFER button on the back of the camera to transfer the selected images to the computer.

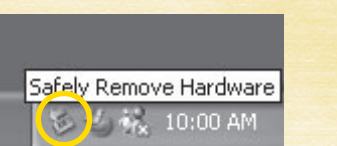


- 8 The selected images have now been sent from the camera to the computer. After confirming that "TRANSFER COMPLETED" is displayed in the camera monitor, remove the camera from the system as described below.

#### Windows

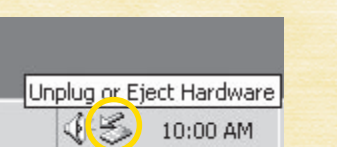
##### Windows XP Home Edition/Professional

Click the "Safely Remove Hardware" icon ( ) in the taskbar and select Safely remove USB Mass Storage Device from the menu that appears.



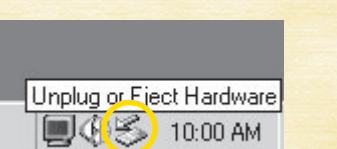
##### Windows 2000 Professional

Click the "Unplug or Eject Hardware" icon ( ) in the taskbar and select Stop USB Mass Storage Device from the menu that appears.



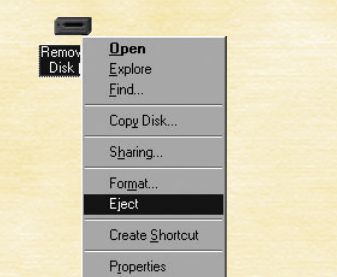
##### Windows Millennium Edition (Me)

Click the "Unplug or Eject Hardware" icon ( ) in the taskbar and select Stop USB Disk from the menu that appears.



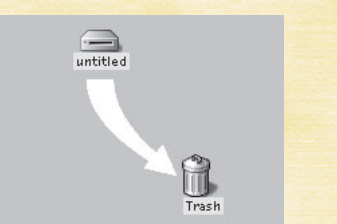
##### Windows 98/Windows 98 Second Edition (SE)

In My Computer, click with the right mouse button on the removable disk corresponding to the camera and select Eject from the menu that appears.



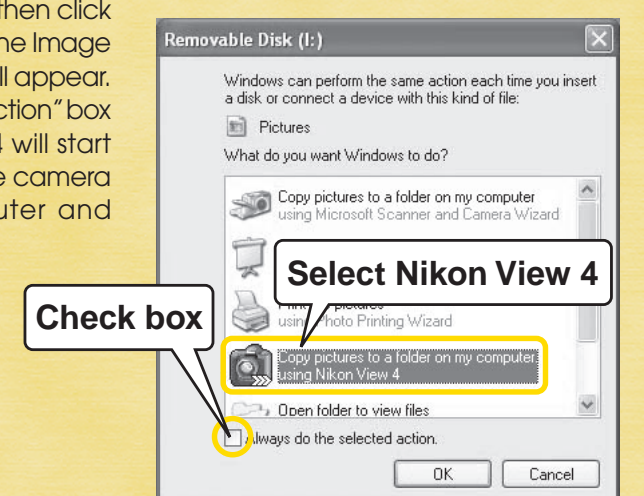
#### Macintosh

Drag the "untitled" camera volume into the Trash.



### Notice for users of Windows XP Home Edition/Professional

When a camera connected to the computer via a USB cable is switched on, the Removable Disk (Auto Play) window will appear on the computer screen. Select "Copy pictures to a folder on my computer using Nikon View 4", then click **OK**. Nikon View 4 will start and the Image Transfer (Image Xfer) window will appear. If the "Always do the selected action" box is checked, then Nikon View 4 will start automatically the next time the camera is connected to the computer and turned on.\*



\* Note that if the camera is reconnected to the computer via a different USB port, the Removable Disk (Auto Play) window may appear again. Either recheck the "Always do the selected action" box, or reconnect the camera using the original USB port.